



AJAX MEETS YOUR
ENGINE NEEDS

AJAX® Introduces New E-565 Pump Jack Engine

Cameron is proud to introduce the environmentally friendly AJAX E-565 natural gas engine. For over 132 years, AJAX equipment has been synonymous with exceptional quality, reliability and durability. Cameron engineers have designed the E-565 natural gas engine with these foundations in mind, coupled with green initiatives, to make one of the most environmentally friendly units of this size in the industry to date.

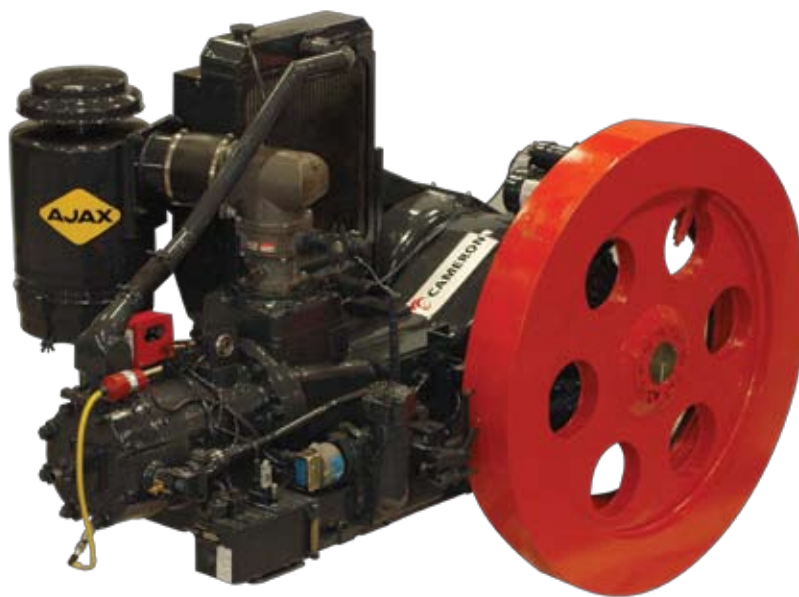


The AJAX E-565 is a rugged, robust one cylinder, two-cycle natural gas engine, ideal for pumping applications in a variety of different operating conditions. It can operate efficiently using a wide range of fuel gas including H₂S warranted up to 2.5%; it emits 2.6 gm/BHP-hr (NOX) and 1.8 gm/BHP-hr (CO).

This new 40 horsepower (tested at ambient 100°F) engine uses proven AJAX engine technology and comes with a host of standard features that include an HD automotive starter, a Ringfeder® flywheel-to-crankshaft locking device (providing an easier, safer way to remove the flywheel during maintenance), an Altronic I ignition system and a standard "Dry" type air filter.

The AJAX E-565 meets all current and proposed federal emissions standards through 2011. The simple design is highly efficient with reduced fuel consumption and reduces operating costs by minimizing down-time maintenance.

For more information, visit us online at www.c-a-m.com/cs.



AJAX E-565